

Injury attendances to Stepping Hill Emergency Department

January to December 2011

This report summarises recorded injury attendances to Stepping Hill Emergency Department (ED) between January and December 2011.

Between January and December 2011 there were 36,674 injury attendances to Stepping Hill ED. Males accounted for over half (54%) of all attendances. The month with the highest injury attendances was April (n=3,553) with December having the lowest attendances (n=2,570) (**Figure 1**). The majority (64%) of attendances did not have a specific injury group recorded. Of the specified injury groups, falls (12%) accounted for the highest proportion followed by sports injury (11%), road traffic collision (RTC) (6%) and assault (4%) (**Table 1**).

For all injuries, the highest proportion of attendances were for persons aged 5 to 19 (26%) and 20 to 34 (22%) years (**Figure 2**). Over half (55%) of fall attendees were aged 65 or over. Nearly half (45%) of assault attendees were aged 20 to 34 years. Almost four in ten (36%) of RTC attendees were aged 20 to 34 years (**Figure 3**).

The majority (88%) of attendees were white. Of the remaining attendees 9% were recorded as not stated whilst 2% were recorded as not recorded (**Table 2**).

The disposal of a patient can give an indication of the severity of the injuries sustained. Over six in ten (61%) of attendees were discharged, almost a quarter

(24%) were referred, and 10% were admitted (**Table 3**). Over four-fifths (82%) of RTC attendees were discharged whilst over a third (35%) fall attendees were admitted (**Table 4**).

Table 5 shows the arrival methods of attendees at Stepping Hill ED. Nearly three-quarters (72%) arrived by car and 19% by ambulance.

Table 6 presents data for assault attendees to Stepping Hill ED. The majority of attendees were male (71%) and 45% were aged 20 to 34 years. Over four-fifths (43%) of assault attendances arrived by ambulance.

Figure 1: Stepping Hill ED: Total injury attendances by gender and month, January to December 2011

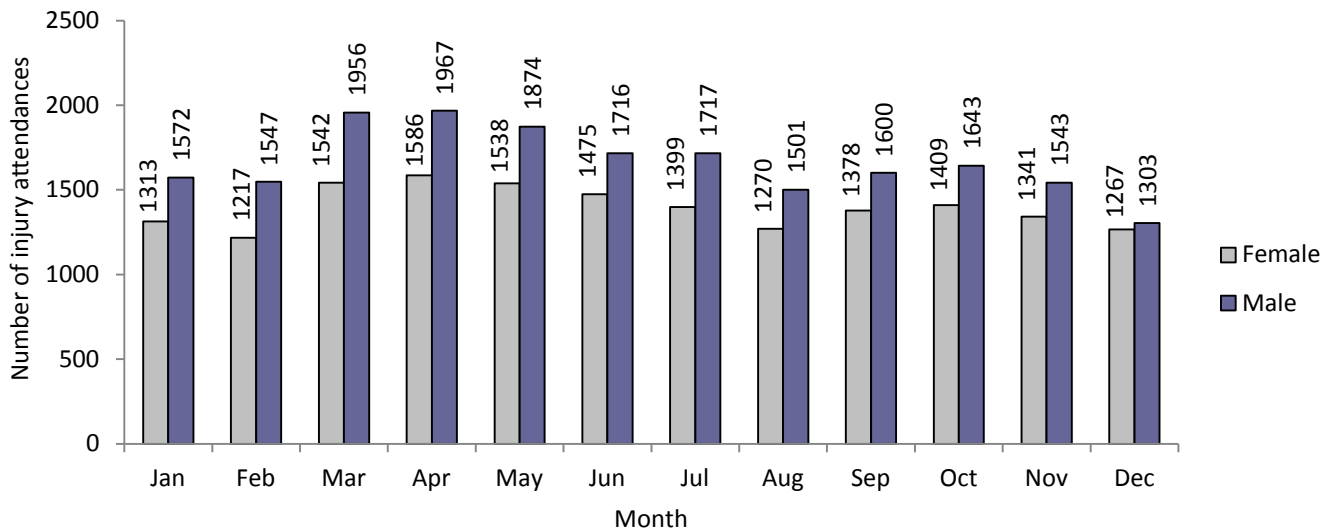


Table 1: Stepping Hill ED: Total injury attendances by injury group and month, January to December 2011*

Injury group	Jan	Feb	Mar	Apr	May	Jun	Jul	Aug	Sep	Oct	Nov	Dec	Total	%
Other injury	1899	1811	2366	2394	2203	2081	1965	1705	1783	1797	1716	1642	23362	64
Falls	329	309	310	345	392	366	399	392	352	408	384	405	4391	12
Sports injury	301	298	458	436	393	292	310	287	403	379	367	164	4088	11
RTC	163	158	156	161	224	199	162	145	199	194	205	181	2147	6
Assault	102	106	130	116	105	97	116	117	122	125	113	105	1354	4
Bites and stings	41	39	43	56	51	87	117	84	69	79	55	29	750	2
Burns and scalds	50	43	35	45	44	69	47	41	50	70	44	44	582	2
Total	2885	2764	3498	3553	3412	3191	3116	2771	2978	3052	2884	2570	36674	100

*Percentages may not add to 100 due to rounding.

Figure 2: Stepping Hill ED: Total injury attendances by age group and month, January to December 2011

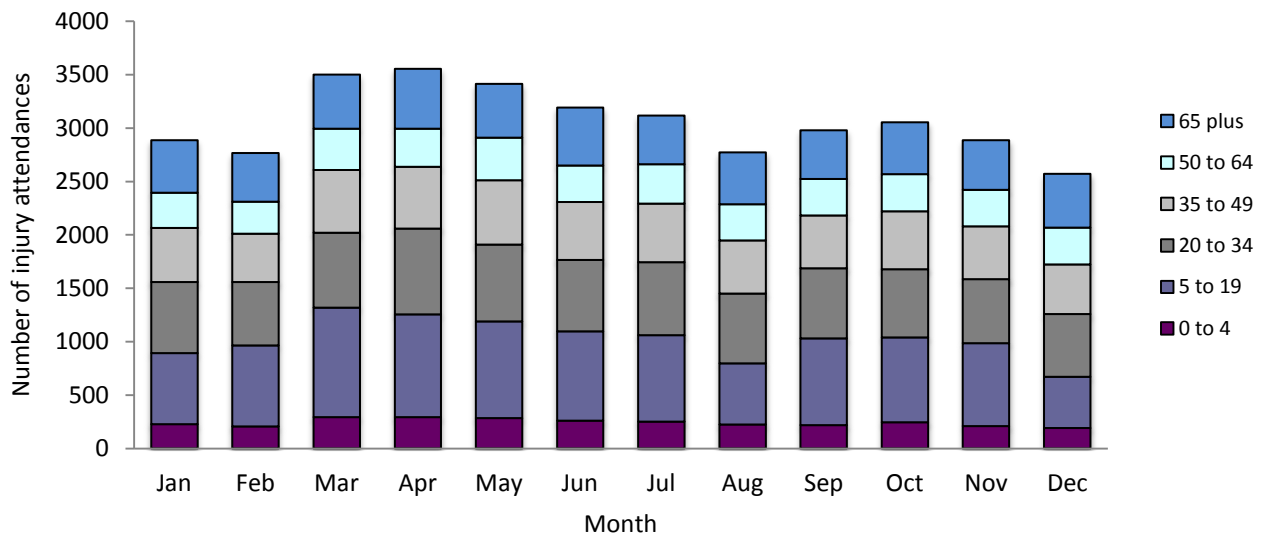


Figure 3: Stepping Hill ED: Total injury attendances by age group and injury group, January to December 2011

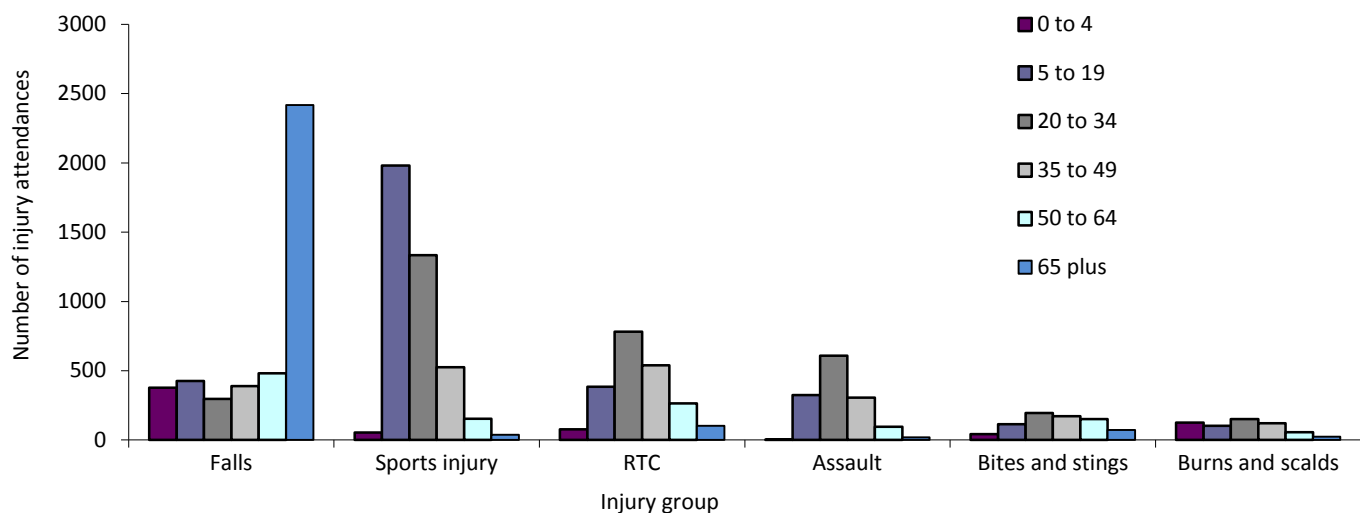


Table 2: Stepping Hill ED: Total injury attendances by ethnicity and month, January to December 2011^{1*}

Ethnicity	Jan	Feb	Mar	Apr	May	Jun	Jul	Aug	Sep	Oct	Nov	Dec	Total	%
White	2527	2457	3119	3107	2967	2746	2708	2406	2588	2733	2542	2237	32137	88
Not stated	219	187	224	266	273	267	260	282	327	250	292	280	3127	9
Not recorded	86	69	89	101	93	106	95	38	***	***	***	***	677	2
Mixed	10	11	13	16	15	20	13	11	14	16	9	13	161	0
Pakistani	***	8	10	18	20	17	10	12	13	16	14	***	147	0
Any other Asian background	6	6	8	16	7	9	10	7	5	9	7	8	98	0
Indian	11	7	9	5	12	7	5	6	9	8	6	9	94	0
Any other ethnic group	7	8	8	6	7	8	8	***	6	***	6	6	79	0
Black	5	6	8	10	9	***	***	***	7	13	***	7	76	0
Chinese	6	***	5	***	5	***	5	***	***	***	***	***	41	0
Bangladeshi	***	***	***	***	***	***	***	***	***	***	***	***	24	0
Any other ethnic group	***	***	***	***	***	***	***	***	***	***	***	***	13	0
Total	2885	2764	3498	3553	3412	3191	3116	2771	2978	3052	2884	2570	36674	100

*Percentages may not add up to 100 due to rounding.

Table 3: Stepping Hill ED: Total injury attendances by method of disposal and month, January to December 2011

Disposal	Jan	Feb	Mar	Apr	May	Jun	Jul	Aug	Sep	Oct	Nov	Dec	Total	%
Discharged	1745	1713	2181	2188	2090	1901	1928	1734	1835	1813	1736	1535	22399	61
Referred/follow-up	736	636	846	849	847	747	731	644	723	756	749	624	8888	24
Admitted	334	308	319	357	326	344	332	312	292	320	287	284	3815	10
Other	70	107	152	159	149	199	125	81	128	163	112	127	1572	4
Total	2885	2764	3498	3553	3412	3191	3116	2771	2978	3052	2884	2570	36674	100

*Percentages may not add up to 100 due to rounding.

Table 4: Stepping Hill ED: Total injury attendances by method of disposal and injury group, January to December 2011^{1*}

Disposal	Assault		Bites and stings		Burns and scalds		Falls		Other injury		RTC		Sports injury		Total	
	n	%	n	%	n	%	n	%	n	%	n	%	n	%	n	%
Discharged	745	55	552	74	207	36	1943	44	14558	62	1756	82	2638	65	22399	61
Referred/follow-up	275	20	125	17	323	55	771	18	5973	26	192	9	1229	30	8888	24
Admitted	137	10	36	5	28	5	1548	35	1833	8	112	5	121	3	3815	10
Other	197	15	37	5	24	4	129	3	998	4	87	4	100	2	1572	4
Total	1354	100	750	100	582	100	4391	100	23362	100	2147	100	4088	100	36674	100

*Percentages may not add to 100 due to rounding.

¹ Please note that all numbers less than five have been suppressed in line with patient confidentiality and if there is only one number <5 in a category then two numbers will be suppressed at the next level.

Table 5: Stepping Hill ED: Total injury attendances by arrival mode and month, January to December 2011

Arrival mode	Jan	Feb	Mar	Apr	May	Jun	Jul	Aug	Sep	Oct	Nov	Dec	Total	%
Car	2051	1937	2591	2618	2542	2309	2308	1954	2187	2192	2103	1755	26547	72
Ambulance	571	531	563	618	560	611	555	573	567	598	550	568	6865	19
Bus	84	96	118	93	92	97	101	84	93	109	90	80	1137	3
Taxi	78	79	83	76	98	88	70	70	57	75	56	88	918	3
Walked	61	84	97	100	69	62	66	61	49	57	55	47	808	2
Other	21	25	23	35	39	7	6	10	14	8	9	14	211	1
Bicycle	***	***	***	***	***	***	***	***	***	***	***	***	34	0
Police	14	10	15	12	6	14	7	12	8	10	14	14	136	0
Public transport	***	***	***	***	***	***	***	***	***	***	***	***	18	0
Total	2885	2764	3498	3553	3412	3191	3116	2771	2978	3052	2884	2570	36674	100

Table 6: Total assault attendances by gender, arrival mode and age group, January to December 2011

Gender	Assault attendees		All injury attendees (n=36,674)
	n	%	%
Male	956	71	54
Female	398	29	46
Arrival mode			
Ambulance	582	43	19
Other	772	57	81
Age group			
0 - 4	***	***	8
5 - 19	325	23	26
20 - 34	608	45	22
35 - 49	305	23	17
50 - 64	95	7	11
65 plus	***	***	16

*8pm to 4am, Friday night/Saturday morning; Saturday night/Sunday morning; Sunday night/Monday morning

Published: March 2012

For further information please contact: Ian Warren, Centre for Public Health, Liverpool John Moores University, 2nd Floor, Henry Cotton Building, 15-21 Webster St., Liverpool, L3 2ET, Tel: 0151 231 4513 or Email: ij.warren@ljmu.ac.uk